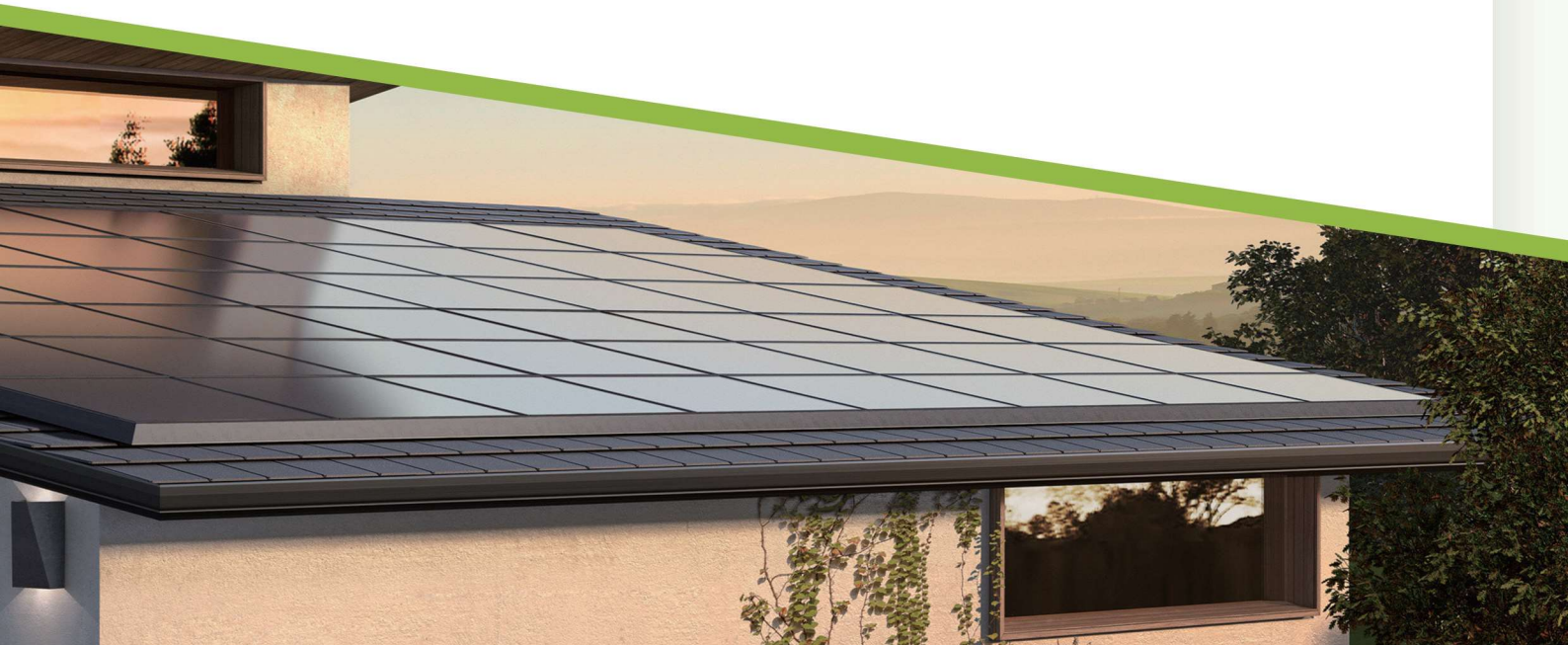
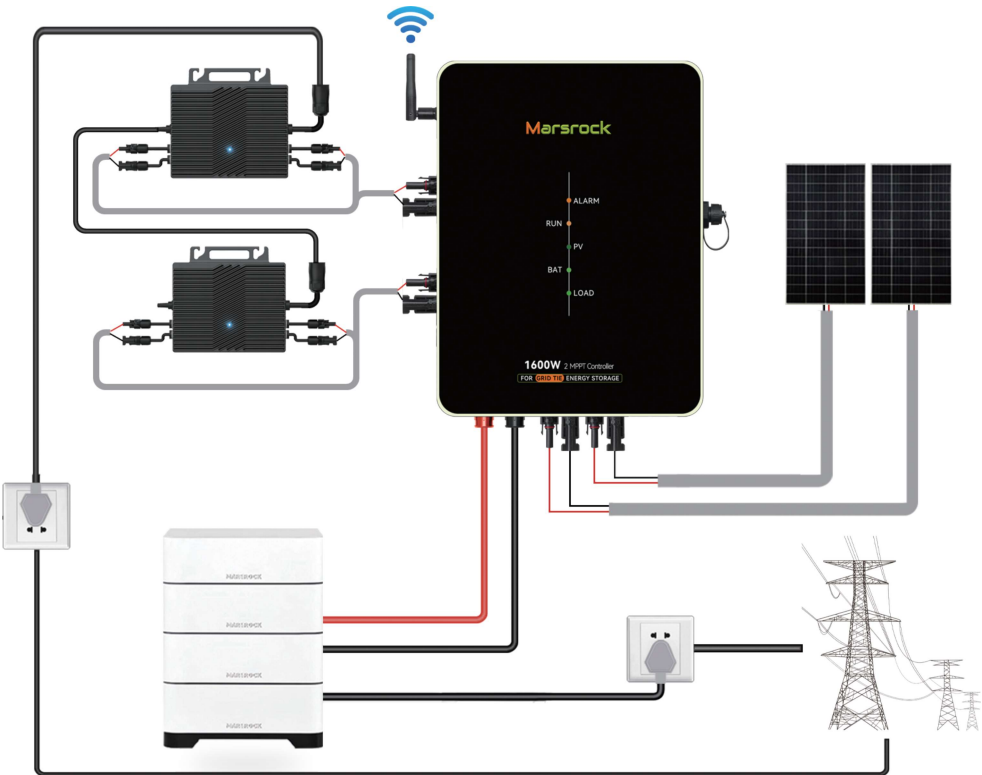


# GRID TIE ENERGY STORAGE SYSTEM



# BRAND STORY



Since ancient times, human exploration and longing for extraterrestrial galaxies have never stopped. There is a beautiful legend of Chang'e running to the moon in ancient times, and there is a beautiful wish for humans to migrate to extraterrestrial planets today.

Nowadays, human exploration technology for the vast universe has entered a new era. The successful return of the first Martian data from NASA's Mars probe "Viking 1", and China sent the "Zhu Rong" probe to Mars in 2020, and then proceed to SpaceX's Mars colonization program. These genius and great projects are gradually becoming realized with the development of technology. The continuous exploration of this red planet by humans represents our extraordinary courage and infinite creativity.

The ancient Romans called this mysterious and unpredictable red planet "Mars" and he was the "God of War" in Roman mythology. The moral is: to move forward bravely, not afraid of difficulties, and to be braver as the battle progresses; In the history of European warfare, once a soldier wore a Mars necklace, no matter what period they were in, they would be full of strength and exceptionally brave on the battlefield, with bows. So the Bullets and bows cannot harm him. This is precisely because in the hearts of the warriors, there is a sacred and invincible God of War, constantly guarding their safe return.

Rock symbolizes resilience, fortitude, and eternity. It is the cornerstone that lays the foundation for the stable growth of MarsRock, implying that the development of the company requires a solid precipitation like a rock. Although it has gone through thousands of years, its true nature has never changed. Isn't this the corporate culture, the spirit of commercial contracts, and the quality of products and services that we strive for?

Based on these concepts and original intentions, we have created "MARS ROCK" as our brand. As Martians, we will always strive hard of generations, even decades. With help of the spirit of human exploration of Mars to pursue the MARS in our hearts.

## ● Grid Tie Storage System Propose

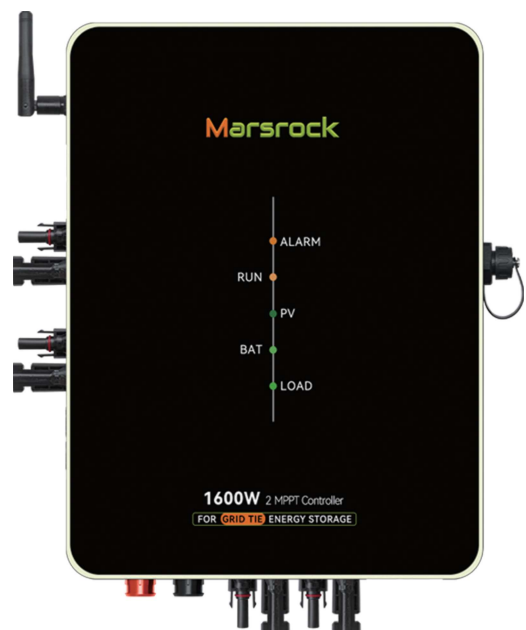
MPPT Solar Controller	1600W	2400W
MPPT QTY	2	3
Solar Operation	20~60V	
MPPT Operation	25~50V	
Suggested Solar	2*800W	3*800W
Charging Current	67A(Max)	67A(Max)
DC Load Current	2*30A(Max)	3*30A(Max)
Self Consumption	2W	
MPPT Efficiency	99.90%	
Coverision Efficiency	98%	
Protection	Overload, reverse, Short circuit, high voltage, low voltage, high temperature	
Type	Sealed, AGM, GEL, Flooded, Lithium, Lithium Carbonate	
System Voltage	48V DC(Lithium:51.2V)	
Battery Operation	40V~60V	
Over Charging Protection	57.6V	
Over Discharging Protection	43.2V	
Discharge Power	1700W(Max)	2500W(Max)
Communication Interface	RS485 with Battery	
WIFI	APP remote monitoring	
Output Power To Inverter	1700W(Max)	2500W(Max)
Inverter Connected QTY	2 PCS	3 PCS
Inverter Output Time	Can be set up by APP or automatically controlled by the smart meter	
Customized Inverter Operated Time	Set up by APP	
Controller Working Mode	Load priority	
Type	3 Phase AC meter	
Communication	WIFI	
AC Connection	AC Plug	
Ambient Temperature	-25°C ~65°C ( Derating from 45°C)	
Storage Temperature	-40°C ~85°C	
Humidity	100% Non-condensing	
Warranty	1 Year	
Approved	CE, UL	





## Grid Tie Storage MPPT Controller 1600W

- Module-level MPPT trackers.
- 2~3 MPPT, peak conversion efficiency >98%.
- Can match most brands microinverter.
- Integrated the BMS.
- Flexibly remote monitor your solar harvest via APP
- Manually or automatically control the microinverter's output.



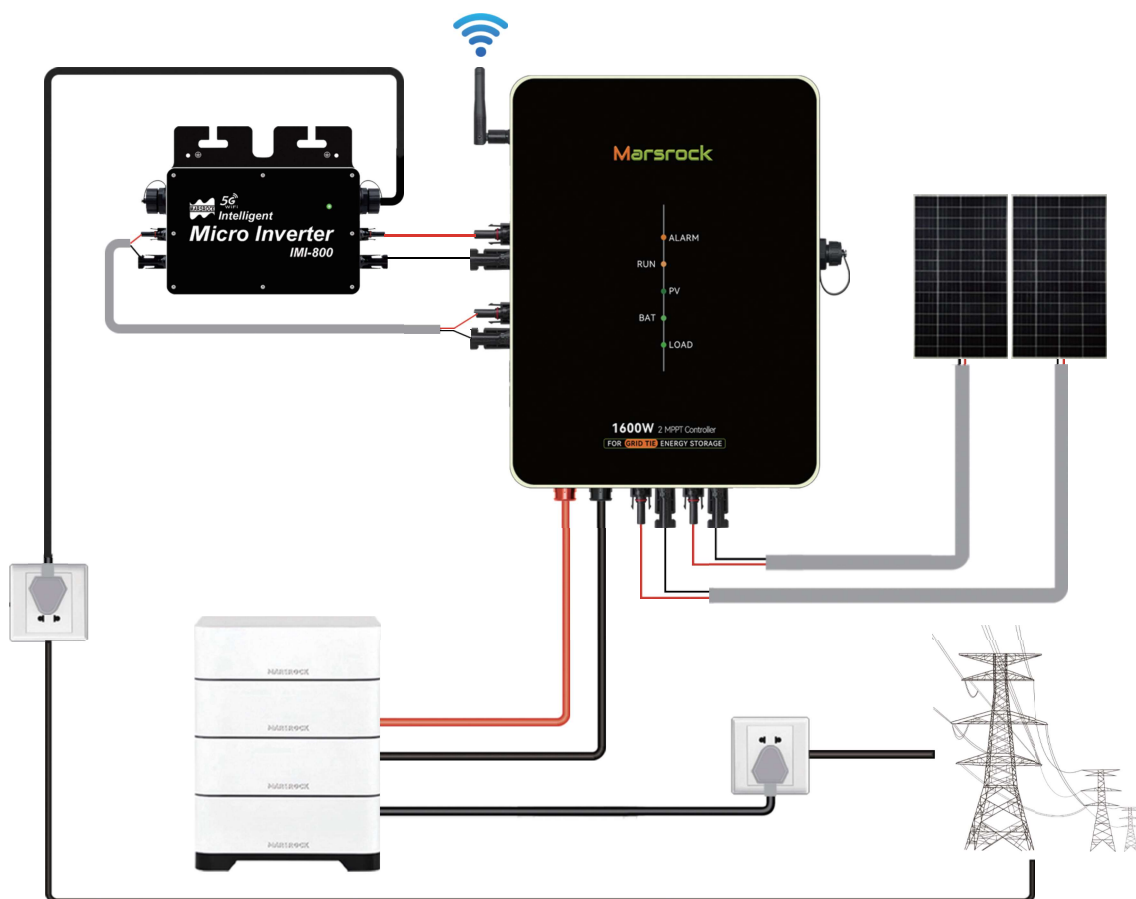
## ● Product Specifications

<b>MPPT Solar</b>	MPPT QTY	2
<b>Charger</b>	Solar Operating	20 ~ 60V
	MPPT Operating	25 ~ 60V
	Max. PV Open Circuit Voltage	60V DC
	Max. PV Array Power	2x1 Tracker 800W
	Max. Charging Current	50A
	Max. DC Load Current	2x30A @45V
	Self Consumption	2W
	MPPT Tracking Efficiency	99.9%
	Conversion Efficiency	98%
	Protection	Overload, reverse connection, short circuit, high voltage, high temperature protection
<b>Battery</b>	Battery Type	Sealed , AGM, Gel, Flooded, Lithium , Lithium carbonate, User-defined
	Battery Voltage	Standard 24V
	Battery Voltage Range	10V ~ 60V
	Customized Discharge Time	Set up the discharge time by APP
<b>Communication</b>	Communication Port	RS485
<b>Energy</b>	Input Power From Micro Inverter	1.6KW
<b>Management</b>	Suggested Microinverter	2PCS*800W inverter or 1 PCS 1000~1600W inverter
	AC Loading (Back-up)	1.2KW @230V(2*800W Inverter Input)
	Loading Peak Power (Back-up)	3.6KW (with 1pc 1.2KW inverter)
	AC Output (on-grid)	1.2KW @230VAC(1pc 1.2KW Inverter Input) (depends on PV and inverter rated power)
	Output Power Factor (Adjustable)	>0.99 Default, 0.8 Leading...0.8 Lagging...
	UPS Switch Time	<10mS
	Level Of Harmonics Distortion	THD <3%
Protection	overload, short circuit, battery low voltage, battery reverse polarity, Island protection	
<b>Mechanical</b>	Net Weight & Gross Weight	3KG/4KGS
	Dimensions	232*301*90 mm
	Cooling	Natural Convection-No Fans
	Enclosure	IP65
<b>Environment</b>	Ambient Temperature	-25 ~ 65°C ( Derating from 45°C)
	Storage Temperature	-40°C ~ +85°C
	Humidity	100% non-condensing
Warranty	3 Years	
<b>Certification</b>	Safety	CE ROHS FCC



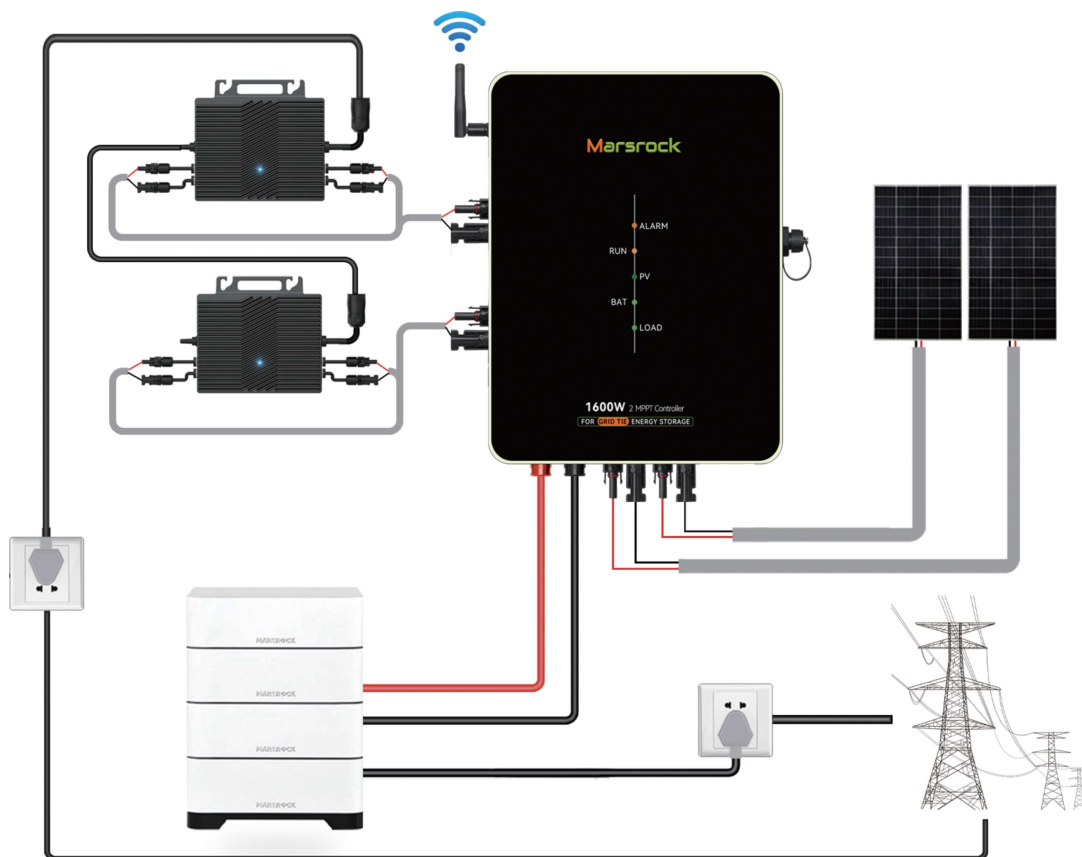


With 1 PCS Microinverter Connecting





With 2 PCS Microinverter Connecting







Tel: +86 5922237280  
Mob: +86 18059289868  
Web: [www.marsrock.com.cn](http://www.marsrock.com.cn)  
[marsrock@marsrock.com.cn](mailto:marsrock@marsrock.com.cn)

